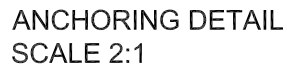


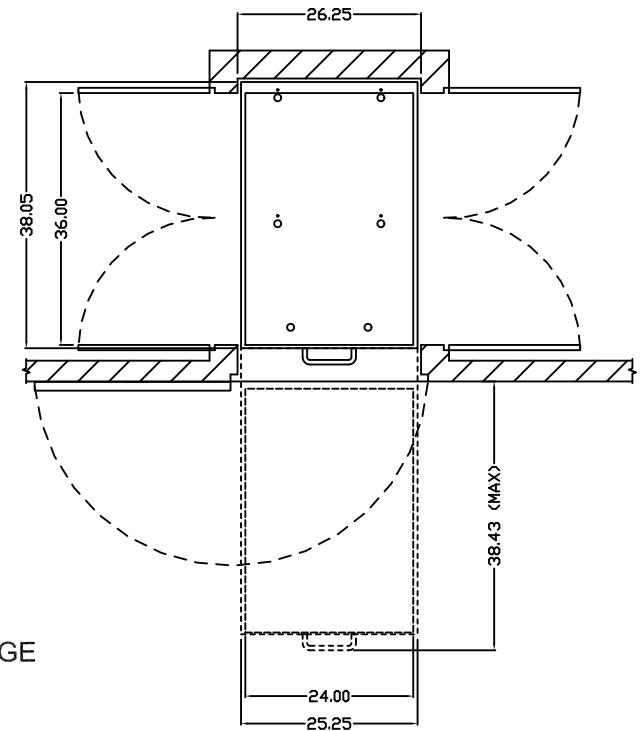
DWG NO.		SH	REV	1	
REVISIONS					
ECO NO.	ZONE	REV	DESCRIPTION	DATE	APPROVED

A vertical line with four points labeled A, B, C, and D from bottom to top. Point B has a horizontal arrow pointing to the right.



		"WORST CASE" FORCE REQUIREMENTS					
SYSTEM CONFIG	CARRIAGE WIDTH	CARRIAGE LENGTH	LEVELER 'A' SUPPORT	LEVELER 'B' SUPPORT	LEVELER 'C' SUPPORT	ANCHOR 'D' (PULL OUT)	ANCHOR 'E' (PULL OUT)
DUAL ENTRY SINGLE CARR	24"	24"	400#	74#	900#	350#	650#
	24"	30"	400	74	900	350	650
	24"	36"	400	74	900	350	650

COPYRIGHT © 19____ SPACESAVER CORPORATION. ALL RIGHTS RESERVED
This material is proprietary and confidential, and the disclosure, reproduction (by photocopy, film, blueprint or otherwise) or incorporation into any information retrieval system without first receiving written approval from Spacesaver Corporation is expressly prohibited by law.





Technical drawings of the 3113-4313 TYP unit, showing front and side views with dimensions.

Front View (Left): Shows a unit with a width of 36.00. The unit features a large upper section and a smaller lower section with two doors, each equipped with a handle.

Side View (Right): Shows the unit's depth of 26.25. It includes a label for "NOMINAL SHELVING HEIGHT" and a dimension for "NOMINAL SHELVING HEIGHT + OPTIONAL CANOPY TOP + 7.06". The unit is labeled "3113-4313 TYP".

Spacesaver
FORT ATKINSON WISCONSIN

 	DWN BY	DATE
	SRI	1/26/09
APVD	DATE	

SIZE	FSCM NO.	DWG NO.	REV
D	58928	CoreSTOR DS 24x36	A
SCALE	NTS	SHEET	OF